

# ARE YOU SURE IT IS twolined spittlebug?



## An identification guide for spittlebugs in Hawai'i

The following key will help you identify the Twolined Spittlebug (*Prosapia bicincta*; TLSB) and distinguish it from two other species of spittlebugs that exist in Hawaii. These other two species have been in Hawai'i for some time and do not pose an economic or environmental threat like TLSB.

### ADULTS:

#### Twolined Spittlebug (*Prosapia bicincta*)



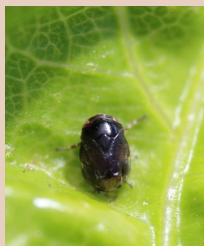
- ~10 mm in length
- Red eyes
- Reddish-black legs
- Two orange stripes across the back

#### Meadow Spittlebug (*Philaenus spumarius*)



- ~6 mm in length
- Starts out green and then turns brown or grey

#### Sunflower Spittlebug (*Clastoptera xanthocephala*)



- ~3 mm in length
- Red eyes
- Color ranges from black to light brown

### NYMPHS:

#### Twolined Spittlebug (*Prosapia bicincta*)



- ~0.4 mm to 8 mm
- Red eyes
- Brownish head, yellow/cream-colored abdomen with two faint pink spots

#### Meadow Spittlebug (*Philaenus spumarius*)



- ~0.3 mm to 6 mm
- Red eyes
- Soft, elongated body
- Change from orange to yellow to green as they grow

#### Sunflower Spittlebug (*Clastoptera xanthocephala*)



- ~0.1 mm to 3 mm
- Very small
- Green to pale yellow

0 mm  
5 mm  
10 mm

**ARE YOU SURE IT IS  
twolined spittlebug?**

see other side  
for photos of  
spittle masses



# ARE YOU SURE IT IS twolined spittlebug?



## An identification guide for spittlebugs in Hawai'i

The nymphs of all three species live and mature in a spittle mass they produce that protects them from environmental extremes and various predators. Make note of where on the plant the spittle masses are located.

### SPITTLE MASSES:

#### Twolined Spittlebug (*Prosapia bicincta*)



- Located primarily on the roots and base of grass plants

#### Meadow Spittlebug (*Philaenus spumarius*)



- Can be found on the leaves of grasses, forbs, and small shrubs

#### Sunflower Spittlebug (*Clastoptera xanthocephala*)



- Found primarily on the leaves and stems of forbs, shrubs like Pamakani

#### If you encounter TLSB:

Take multiple photos and  
report the location to  
**643pest.org**



: @UHBIISC



: @bigislandinvasivespecies

**For more information, visit [tlsbhawaii.com](http://tlsbhawaii.com)**

Funding provided by the Hawaii Dept. of Agriculture under contract No. 65973 awarded to UH-Mānoa.



CTAHR, Mark Thorne  
thornem@hawaii.edu  
(808) 887-6182



**BIISC**

Big Island Invasive Species Committee  
biisc@hawaii.edu  
(808) 933-3340



Hawaii Dept of Agriculture  
hdoa.hawaii.gov  
(808) 974-4140